



[www.MarineDelivers.com](http://www.MarineDelivers.com)

# Chamber of Marine Commerce (CMC) 2026 Membership Overview

# Chamber of Marine Commerce

- **Advocating for marine shipping organizations and their stakeholders** for more than 65 years.
- **Representing over 100 organizations in Canada and the United States** whose operations involve the Great Lakes and the St. Lawrence Seaway, the East Coast, and the Arctic.
- **Linking all users and providers in the marine logistics chain:**
  - Cargo shippers (customers)
  - Shipowners
  - Seaway, ports & terminals
  - Marine equipment and services providers
  - Cities, municipalities and industry associations
- **Providing operational and technical expertise** to address issues.
- **Offering unique opportunities for advocacy** on marine industry issues.

# Addressing key marine issues

- ✓ Marine policy
- ✓ Supply chain efficiency
- ✓ Infrastructure investment
- ✓ Environmental sustainability
- ✓ Marine services and fees
- ✓ Regulations
- ✓ Fiscal policy
- ✓ Seafarer supply

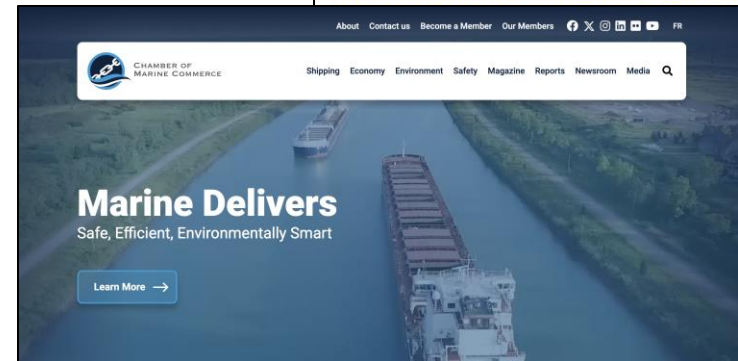
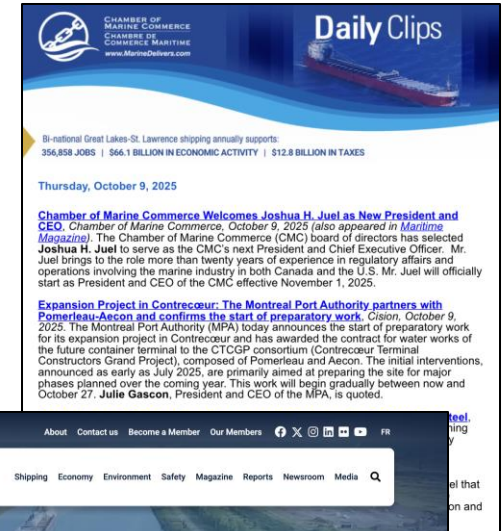
# Recent files successfully addressed

- Exemption of laker vessels regarding 2025 USTR port fees on Chinese-built vessels
- Avoiding a proposed 300% increase in US agricultural inspection fees in 2024
- Funding ballast water innovation (2023, \$12M) and green shipping corridor (2024 - \$165M)
- Government creating a Canadian version of the global Carbon Intensity Indicator
- Protection of the current established pilot certification standards and pilotage areas
- Creation of a first-ever Ontario Marine Transportation Strategy in 2023
- Deferred implementation of Ballast Water Convention to 2030 for older vessels and extensions for other vessels

# Member Communications

## Keeping you informed:

- Daily “Media Clips” to track relevant news
- Ongoing “Issue Updates” for key developments
- Annual “Year in Review” Report
- Virtual Events
- Communications Committee
- Government Advocacy Committee



# External Communications

## Keeping the public informed:

- News releases
- Articles
- Social Media Activity
- Advertising
- In-person Events
- Virtual Events
- Speaking Opportunities
- Engaging Videos

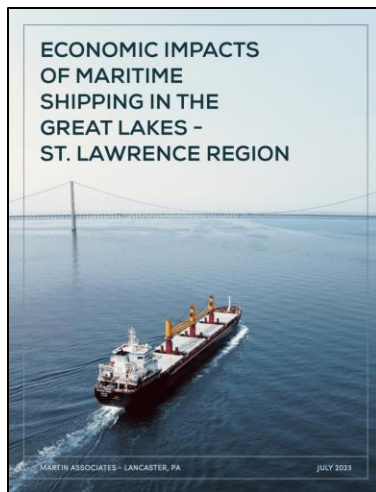


# Research and Analysis

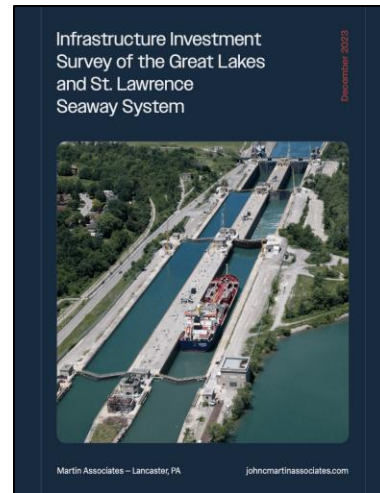
## *Supporting advocacy with data:*

- Statistical collection and analysis
- Annual operational data gathering / reporting
- Research – key industry data

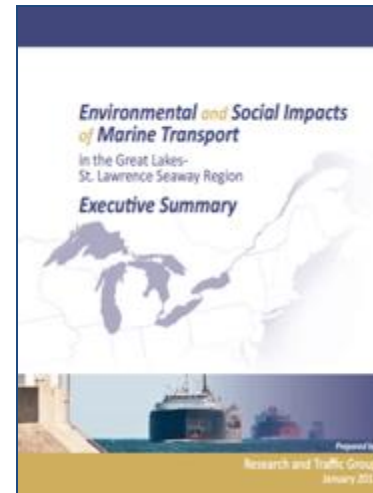
### Economy



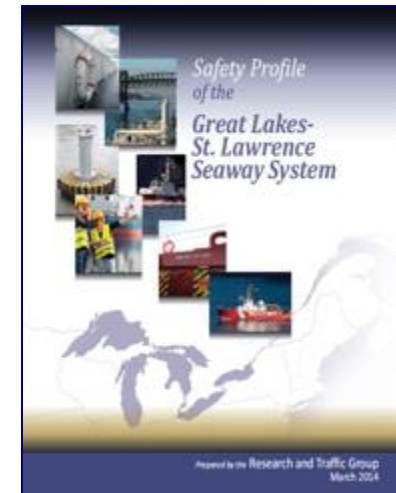
### Investment



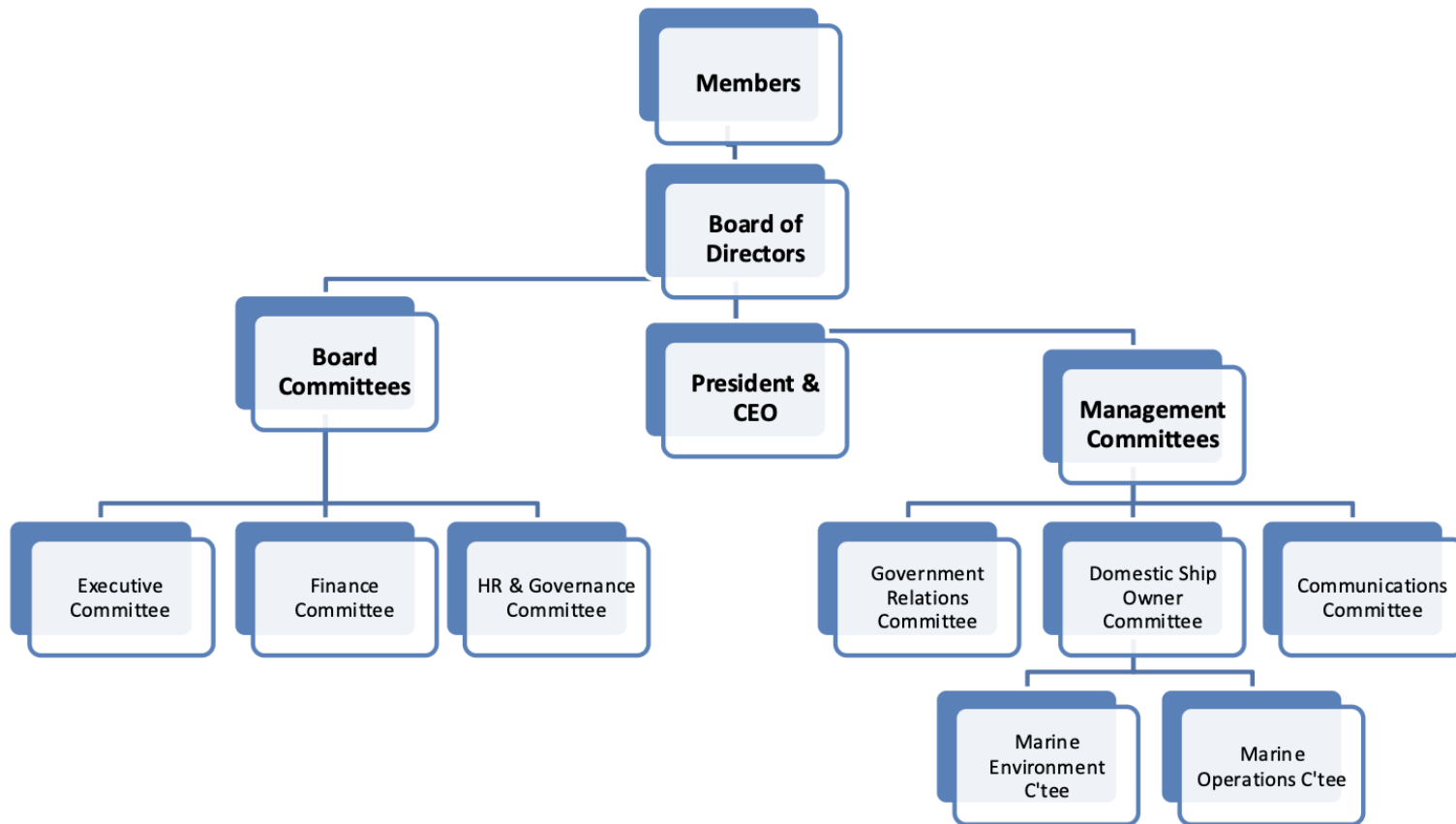
### Environment/Social



### Safety



# Governance and Management



# Membership Benefits

## ***Linking the marine community***

- CMC represents a broad range of marine stakeholders – cargo shippers, carriers, ports, terminals and marine service providers
- Bi-national membership across U.S. states and Canadian provinces - the only bi-national organization of its kind focused on commercial maritime interests
- CMC provides a link with other marine associations from coast to coast and around the world
- Advises various industrial associations on marine transport related issues

## ***Respected voice on marine transportation issues***

- Advocacy at federal, provincial, and state government levels
- Strong relations with key Federal Government departments
- Regular contact with Members of Parliament, Congress and political staff
- Active in Washington and Great Lakes states on U.S. marine transportation policy
- Consulted regularly by government on key marine policy and legislative developments

## ***Engaged in key industry / government advisory forums***

- Representation at various industry forums, including CMAC (National and Regional), USCG Marine Industry Day, National Marine Advisory Board (Canadian Coast Guard), Pilotage Advisory Committees, Seaway User Committee
- Participation at International Maritime Organization, MSC and MEPC (Canadian Delegation)
- Board member of the International Chamber of Shipping

**Marine Delivers**

*Safe, Efficient and Environmentally Smart*

# Membership Benefits (Cont'd)

## ***Operational and environmental expertise***

- Marine Operations and Marine Environment Committees addressing broad range of operational, technical and environmental issues
- Monitoring regulatory changes that could impact the membership so advocacy can begin early on
- Assessment of maritime legislation and regulations impacting operations of members

## ***Strategic public affairs program supporting advocacy agenda***

- Program to increase awareness and benefits of marine shipping
- Media relations and media monitoring – providing “Daily News Clips” to members
- Organizing and supporting industry events – conferences, and public outreach
- Public / media relations support for member companies
- Regular ‘Issue Updates’ and ‘News Updates’ on priority issues, distributed to all members
- Targeted advertising campaigns, using latest digital techniques
- Website with unique member portal feature
- Active social media presence and engagement

# Membership Fee Structure 2026

Member Category	Annual Fee Assessment Methods / Ranges
<b>Shippers</b>	<ul style="list-style-type: none"> <li>• Cargo levy (percentage of freight charges)</li> <li>• Annual assessments by special arrangement</li> </ul>
<b>Shipowners</b>	<ul style="list-style-type: none"> <li>• Based on fleet GRT formula</li> </ul>
<b>Ports</b>	<ul style="list-style-type: none"> <li>• \$3,200 - \$20,500 depending on cargo volume / revenue</li> </ul>
<b>Terminals</b>	<ul style="list-style-type: none"> <li>• \$1,555 - \$7,500 depending on cargo volume / revenues</li> </ul>
<b>Marine Related</b>	<ul style="list-style-type: none"> <li>• \$1,000 - \$7,500 depending on company size (generally revenues)</li> </ul>
<b>Cities &amp; Municipalities</b>	<ul style="list-style-type: none"> <li>• \$2,650 - \$5,500</li> </ul>

Period: Jan 1-Dec 31; Fees pro-rated for partial year new memberships

Currency: Based on country of residence (i.e., Canada = C\$; United States = US\$)



CHAMBER OF  
MARINE COMMERCE  
[www.MarineDelivers.com](http://www.MarineDelivers.com)

For more information: [www.marinedelivers.com](http://www.marinedelivers.com)

## Contacts:

### Jason Card

Director of  
Communications

[jcard@cmc-ccm.com](mailto:jcard@cmc-ccm.com)

### Maggie Murphy

Communications and  
Membership Specialist

[mmurphy@cmc-ccm.com](mailto:mmurphy@cmc-ccm.com)