



www.MarineDelivers.com

Chamber of Marine Commerce (CMC) 2026 Membership Overview

Chamber of Marine Commerce

- **Advocating for marine shipping organizations and their stakeholders** for more than 65 years.
- **Representing over 100 organizations in Canada and the United States** whose operations involve the Great Lakes and the St. Lawrence Seaway, the East Coast, and the Arctic.
- **Linking all users and providers in the marine logistics chain:**
 - Cargo shippers (customers)
 - Shipowners
 - Seaway, ports & terminals
 - Marine equipment and services providers
 - Cities, municipalities and industry associations
- **Providing operational and technical expertise** to address issues.
- **Offering unique opportunities for advocacy** on marine industry issues.

Addressing key marine issues

- ✓ Marine policy
- ✓ Supply chain efficiency
- ✓ Infrastructure investment
- ✓ Environmental sustainability
- ✓ Marine services and fees
- ✓ Regulations
- ✓ Fiscal policy
- ✓ Seafarer supply

Recent files successfully addressed

- Exemption of laker vessels regarding 2025 USTR port fees on Chinese-built vessels
- Avoiding a proposed 300% increase in US agricultural inspection fees in 2024
- Funding ballast water innovation (2023, \$12M) and green shipping corridor (2024 - \$165M)
- Government creating a Canadian version of the global Carbon Intensity Indicator
- Protection of the current established pilot certification standards and pilotage areas
- Creation of a first-ever Ontario Marine Transportation Strategy in 2023
- Deferred implementation of Ballast Water Convention to 2030 for older vessels and extensions for other vessels

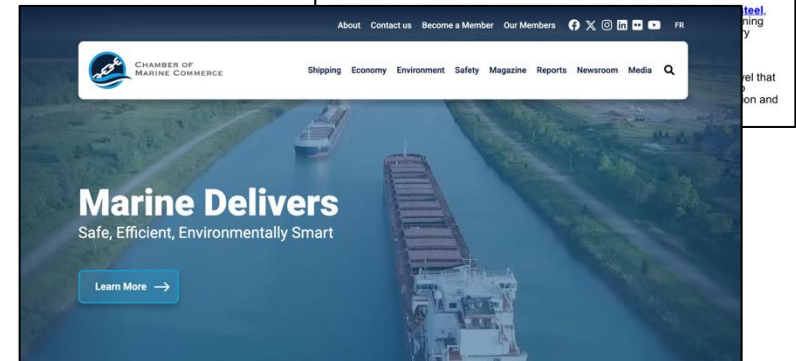
Marine Delivers

Safe, Efficient and Environmentally Smart

Member Communications

Keeping you informed:

- Daily “Media Clips” to track relevant news
- Ongoing “Issue Updates” for key developments
- Annual “Year in Review” Report
- Virtual Events
- Communications Committee
- Government Advocacy Committee



External Communications

Keeping the public informed:

- News releases
- Articles
- Social Media Activity
- Advertising
- In-person Events
- Virtual Events
- Speaking Opportunities
- Engaging Videos

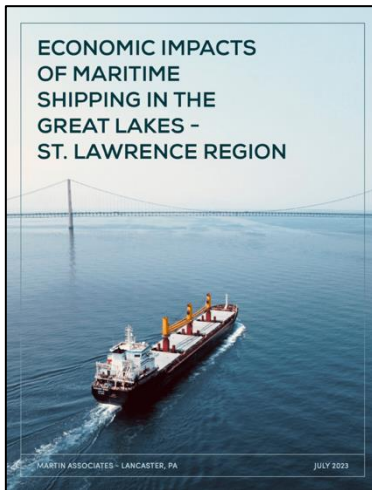


Research and Analysis

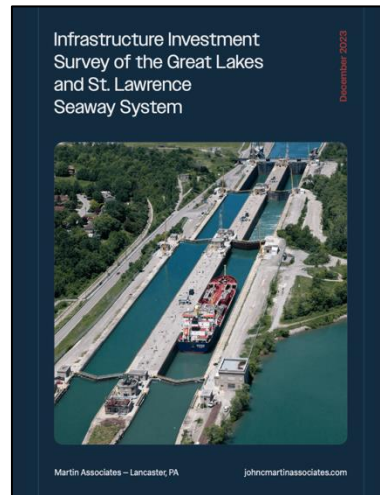
Supporting advocacy with data:

- Statistical collection and analysis
- Annual operational data gathering / reporting
- Research – key industry data

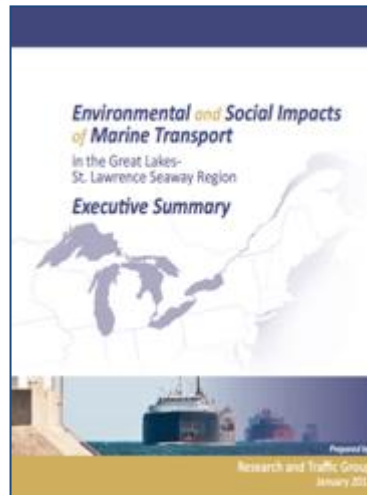
Economy



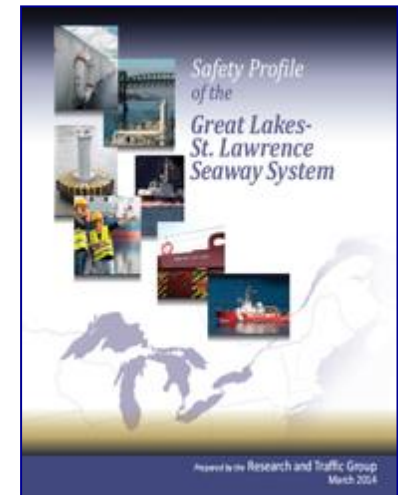
Investment



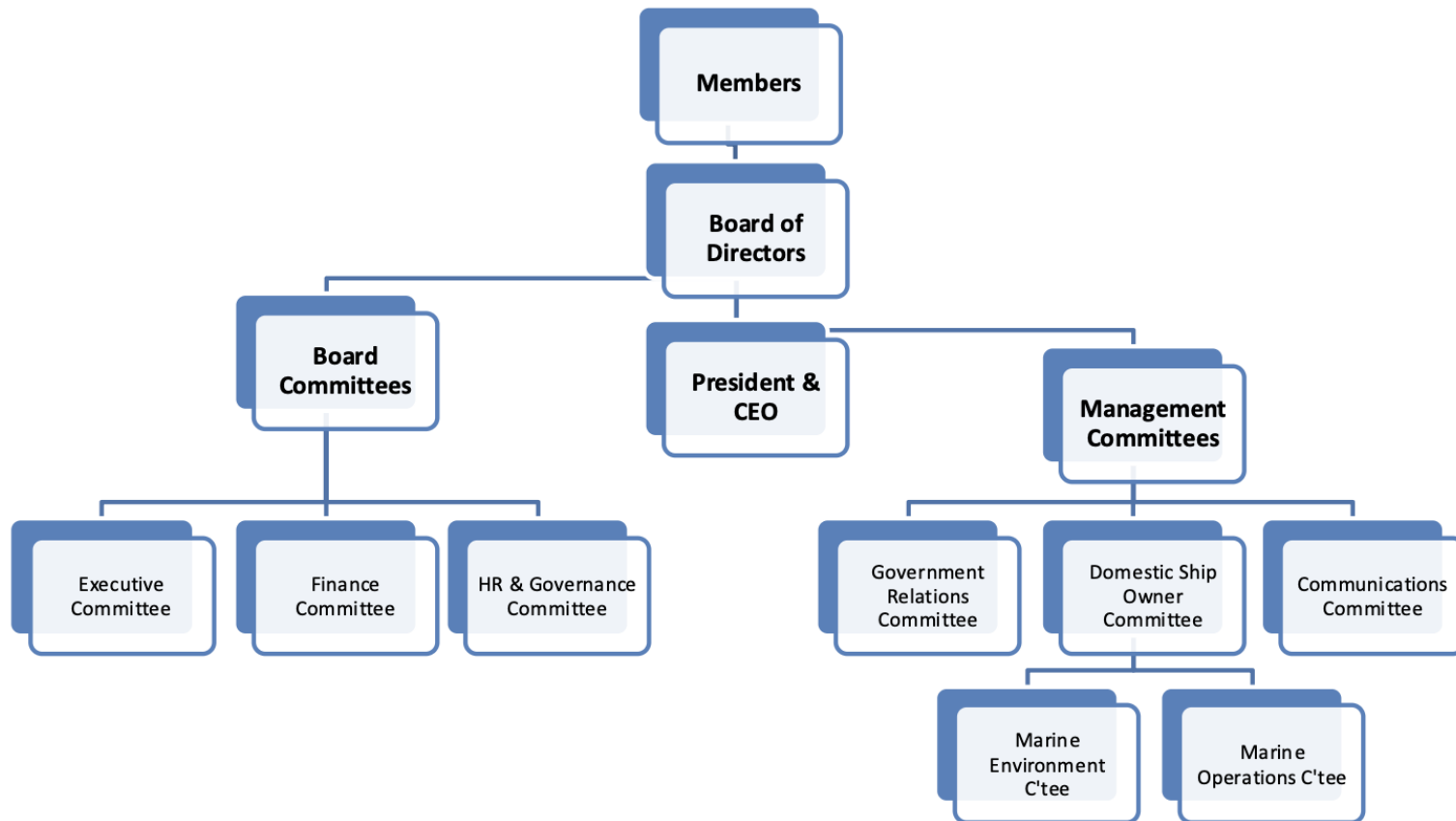
Environment/Social



Safety



Governance and Management



Membership Benefits

Linking the marine community

- CMC represents a broad range of marine stakeholders from coast to coast – cargo shippers, carriers, ports, terminals and marine service providers
- Bi-national membership across U.S. states and Canadian provinces - the only bi-national organization of its kind focused on commercial maritime interests
- CMC provides a link with other marine associations from coast to coast and around the world
- Advises various industrial associations on marine transport related issues

Respected voice on marine transportation issues

- Advocacy at federal, provincial, and state government levels
- Strong relations with key Federal Government departments
- Regular contact with Members of Parliament, Congress and political staff
- Active in Washington and Great Lakes states on U.S. marine transportation policy
- Consulted regularly by government on key marine policy and legislative developments

Engaged in key industry / government advisory forums

- CMC members represented on Transport Canada's Marine Transportation Advisory Board (MTAC)
- Representation at various industry forums, including CMAC (National and Regional), USCG Marine Industry Day, Marine Advisory Board (Canadian Coast Guard), Pilotage Advisory Committees, Seaway User Committee, Transport Canada Ballast Water Working Group (co-chair)
- Participation at International Maritime Organization (IMO) and MEPC (Canadian Delegation)
- Board member of the International Chamber of Shipping (ICS)

Marine Delivers

Safe, Efficient and Environmentally Smart

Membership Benefits (Cont'd)

Operational and environmental expertise

- Marine Operations and Marine Environment Committees addressing broad range of operational, technical and environmental issues
- Monitoring regulatory changes that could impact the membership so advocacy can begin early on
- Assessment of maritime legislation and regulations impacting operations of members

Strategic public affairs program supporting advocacy agenda

- Program to increase awareness and benefits of marine shipping
- Media relations and media monitoring – providing “Daily News Clips” to members
- Organizing and supporting industry events – conferences, and public outreach
- Public / media relations support for member companies
- Regular ‘Issue Updates’ and ‘News Updates’ on priority issues, distributed to all members
- Targeted advertising campaigns, using latest digital techniques
- Website with unique member portal feature
- Active social media presence and engagement

Marine Delivers

Safe, Efficient and Environmentally Smart

Membership Fee Structure 2026

Member Category	Annual Fee Assessment Methods / Ranges
Shippers	<ul style="list-style-type: none">• Cargo levy (percentage of freight charges)• Annual assessments by special arrangement
Shipowners	<ul style="list-style-type: none">• Based on fleet GRT formula
Ports	<ul style="list-style-type: none">• \$3,200 - \$20,500 depending on cargo volume / revenue
Terminals	<ul style="list-style-type: none">• \$1,555 - \$7,500 depending on cargo volume / revenues
Marine Related	<ul style="list-style-type: none">• \$1,000 - \$7,500 depending on company size (generally revenues)
Cities & Municipalities	<ul style="list-style-type: none">• \$2,650 - \$5,500

Period: Jan 1-Dec 31; Fees pro-rated for partial year new memberships

Currency: Based on country of residence (i.e., Canada = C\$; United States = US\$)



CHAMBER OF
MARINE COMMERCE
www.MarineDelivers.com

For more information: www.marinedelivers.com

Contacts:

Jason Card

Director of
Communications

jcard@cmc-ccm.com

Maggie Murphy

Communications and
Membership Specialist

mmurphy@cmc-ccm.com

Marine Delivers

Safe, Efficient and Environmentally Smart